

Strategies for the participation of families in the support of early childhood intervention teams

Marta Joana Pinto* & Ana Maria Serrano**

*ESS, Polytechnic of Porto; ESS, Polytechnic of Leiria; Local Early Intervention Team - Gaia Sul, National Early Childhood Intervention System (SNIPI)

** Institute of Education, Minho University
Portugal

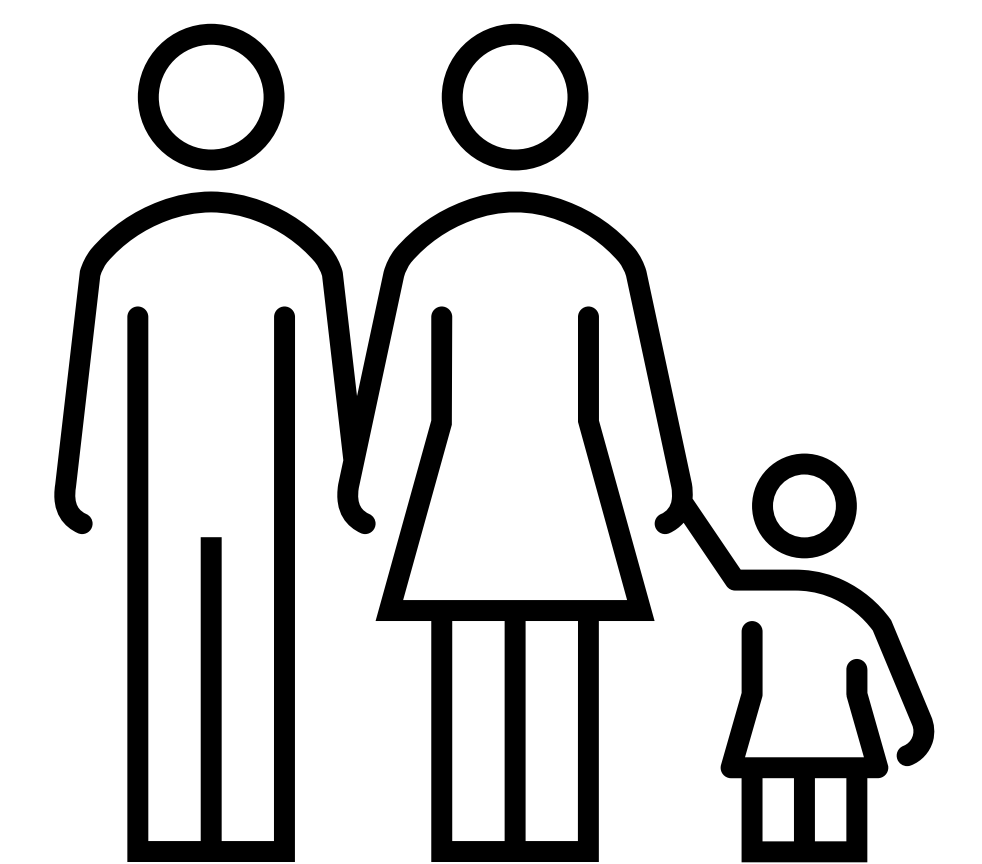
#1 Provide for family choice and participation at all different times in the Early Childhood Intervention cycle of intervention.

#2 Home visits – natural contexts of the child and the family.



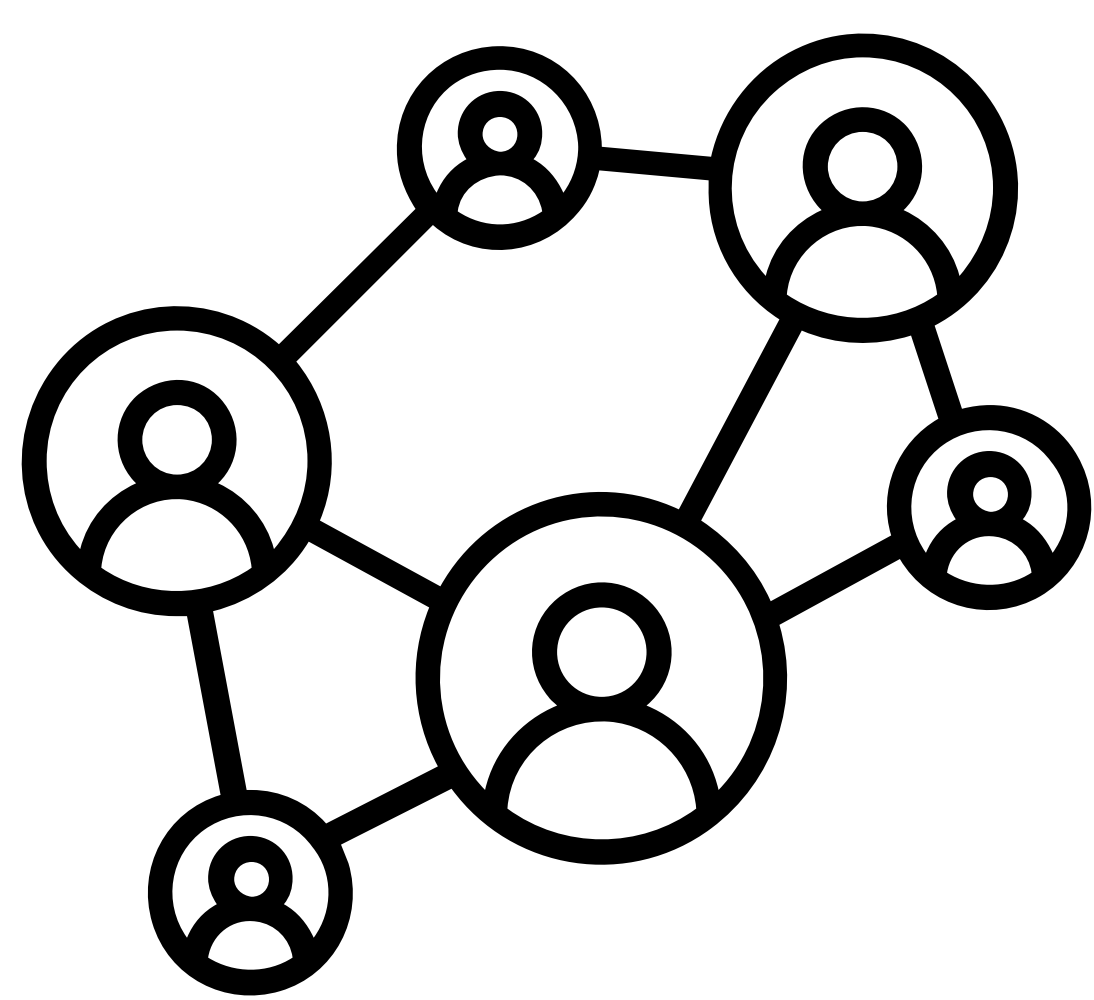
#3 Schedule home visits at times when routines take place and plan the next visit before leaving the family home.

#4 Encourage and support parent's ideas.



#5 Develop functional goals with family for the child and the family

#6 Focus the intervention on the child's and family's daily routines and activities (e.g., meals, bath time or dressing/ undressing).

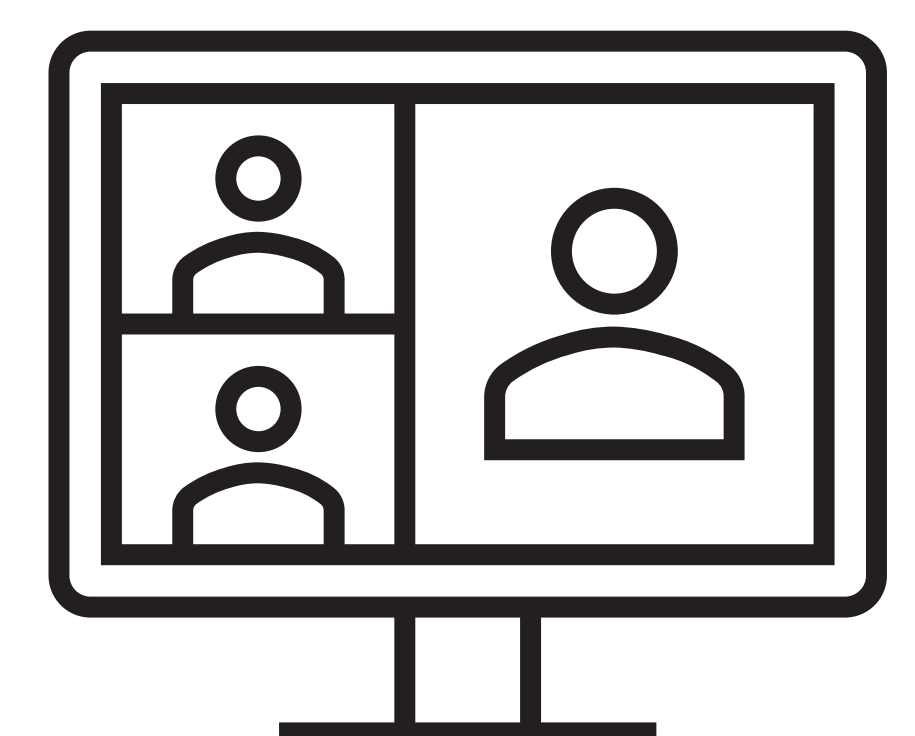


#7 Support parent-mediated development and learning.

#8 Strengthen family support networks social inclusion.

#9 Use *whatsapp* as means of communication between visits.

#10 Use vídeo recording of parent/child interactions to comment jointly with the family.



#11 Reinforce the skills, confidence and enjoyment of family members in promoting the child's development and learning using modeling, mentoring and coaching tools.

✓ elow, K. M., Walker, D., Jia, F., Irvin, D., & Turcotte, A. (2020). Text messaging as an enhancement to home visiting: building parents' capacity to improve child language-learning environments. *Early Childhood Research Quarterly*, 51, 416–429. <https://doi.org/10.1016/j.ecresq.2019.12.010>

✓ Gail, J., Soderberg, J., Abbott, R., Garzon, R., & Scott, C. (2022). Improving language support for infants and toddlers. Results of FIND coaching in childcare. *Infants & Young Children*, April/Jun(35), 91–105. <https://doi.org/https://doi.org/10.1097/YC.0000000000000214>

✓ García-Sánchez, F. A., Escorcía-Mora, C. T., & Castellano, I. F. (2020). Reflexiones y estrategias de acompañamiento familiar en atención temprana. *Revista de Logopedia, Foniatría y Audiología*. <https://doi.org/https://doi.org/10.1016/j.rlfa.2020.02.004>

✓ Korfmacher, J., Green, B., Staerkel, F., Peterson, C., Cook, G., Roggman, L., Faldowski, R. A., & Schiffman, R. (2008). Parent involvement in early childhood home visiting. *Child and Youth Care Forum*, 37, 171–196. <https://doi.org/10.1007/s10566-008-9057-3>

✓ Rush, D. D. (2018). From couching to coaching how do we get families engaged in early intervention? It starts with us communicating their enormous influence on their children's development. *ASHA Leader*, 23(10), 46–52. <https://doi.org/10.1044/leader.FTR1.23102018.46>